

1	Filannoo 1ffaa Filannoo Tokko	2	Filannoo 2ffaa Yoo jiraate, filannoo isa 1ffaaraa adda ta'uu qaba	3	3ffaa Yoo jiraate, filannoo isa 1ffaafi 2ffaarraa adda ta'uu qaba
<input type="radio"/>	WEBBER PARK Parks Party	<input checked="" type="radio"/>	WEBBER PARK Parks Party	<input type="radio"/>	WEBBER PARK Parks Party
<input checked="" type="radio"/>	BELTRAMI PARK Parks United	<input type="radio"/>	BELTRAMI PARK Parks United	<input type="radio"/>	BELTRAMI PARK Parks United
<input type="radio"/>	LOWRY PARK Parks United	<input type="radio"/>	LOWRY PARK Parks United	<input type="radio"/>	LOWRY PARK Parks United
<input type="radio"/>	POWDERHORN PARK Parks Party	<input type="radio"/>	POWDERHORN PARK Parks Party	<input checked="" type="radio"/>	POWDERHORN PARK Parks Party

SADARKAA 1:



Kaadhimamaa keessan isa olaanaa filadhaa. Kun kaadhimamaa filannoo 1ffaa keessanii yoo ta'u sagalee dursee ilaalamu ta'a.

SADARKAA 2:



Filannoo 2ffaa yoo qa-baattan (hin barbaachisu), kaadhimamaa biraa filachuu dandeessu. Kun kaadhimamaa filannoo 1ffaa keessanii irraa adda ta'uu qaba.

SADARKAA 3:



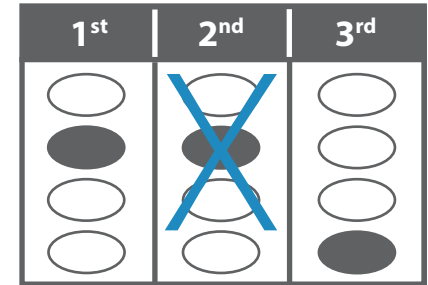
Yoo filannoo 3ffaa qa-baattan (hin barbaachisu), filannoo biraa filachuu dandeessu. Kun filannoo 1ffaa fi 2ffaa keessan irraa adda ta'uu qaba.

Filannoon akkamiin akka lakkaawamu:

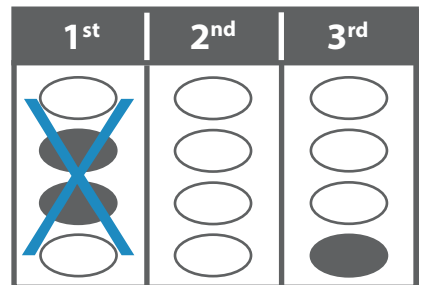
Sagaleen filannoo 1ffaa hundi ni lakkaa'ama. Kaadhimamaan kamiyyuu sagalee mo'achuuf barbaachisu yoo hin qabaanne, kaadhimamaan sagalee xiqqaa qaban ni haqamu. Adeemsi kun hanga kaadhimamaa tokko sagalee gahaa injifachuuf argatutti itti fufa. Qondaaltonni filannoo filannoo kee 2ffaa ykn 3ffaa kan fayyadamu yoo filannoo kee 1ffaan duraan dhabamsiifame qofa.

GAAFFILEE? Akkaataa waraqaa filannoo sadarkaa sadarkaan jiru itti xumuraamu irratti odeeffannoo dabalataaf hojjetaa filannoo gaafadhaa.

BALLOT ERRORS



Kaadhimamaa tokko takkaa caalaa hin filatinaa.



Kaadhimamaa tokko caalaa tarree tokko keessatti hin filatinaa.