


Minneapolis
Elections & Voter Services
980 E. Hennepin Ave.
Minneapolis, MN 55414

PRSRT STD
U.S. Postage

PAID

Permit No. 2140
Twin Cities, MN



For Placement Only




Minneapolis
Elections & Voter Services

**YourCity.
YourVote.**

2025 Minneapolis Voter Information Guide

Election Day is Tuesday, November 4

Polls are open from 7 a.m. – 8 p.m.

Look up your polling place location before you go: pollfinder.sos.mn.gov

What will I be voting on?

- Mayor
- City Council Member (all 13 wards)
- Board of Estimate & Taxation (2 at-large)
- Park Board (all 6 districts & 3 at-large)



Who are the candidates?

- For a sample ballot, enter your address at mnvotes.gov/myballot
- You can mark and bring a sample ballot with you to remember your choices.



Who can vote?

You can vote in Minnesota if you are:

- A U.S. citizen;
- At least 18 years old on Election Day (16- and 17-year-olds can pre-register);
- A resident of Minnesota for at least 20 days before Election Day;
- Not currently incarcerated for a felony conviction; and
- Not under a court order that revokes your right to vote.

How do I register or update my registration?

You can see if your registration is current at mnvotes.sos.mn.gov/voterstatuscheck/index



Register before Election Day

- We encourage you to register before Election Day—it will save you time at the polling place and you won't have to bring anything with you.
- To register online, visit mnvotes.gov/register no later than **Tuesday, October 14**.

Register in person when you vote

- You can register in person when voting early or on Election Day.
 - To register in person, you must have a proof of residence listed on the ***Guide to Registering on Election Day*** page of this booklet.
- You can also register when you vote by mail.



Vote by Mail

When and how to apply for a mail ballot

- Don't wait until the last minute to apply! We recommend applying by **October 28**.
- You can apply after this date, but each day is less time to receive and return your ballot in time.
- Learn how to apply at vote.minneapolismn.gov/voters/vote-by-mail or call 311.

Deadline and options for returning your ballot



Your ballot **will not count** if it arrives after Election Day!

Ballots must be received by **5 p.m.** on Election Day if you are dropping off in person.

Ballots must be received by **8 p.m.** on Election Day if they are arriving through mail or package delivery.

- **Mail it back:** We recommend **mailing it back by October 28**. It must be received by 8 p.m. on Election Day. As it gets closer to Election Day, consider dropping it off.
- **Drop it off:** Bring it to the Minneapolis Elections & Voter Services office (980 E Hennepin Ave) **during business hours**. You may also drop it off during voting hours at Early Voting locations.
- **Election Day drop off:** Bring it to Minneapolis Elections & Voter Services (980 E Hennepin Ave) between 8 a.m. and 5 p.m. **DO NOT** bring your ballot to a polling place on Election Day. By law, we cannot accept mail ballots at the polls.

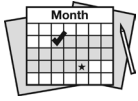
Concerned about your ballot arriving in time?

- You can vote at your polling place if we haven't accepted your mail ballot. If your mail ballot has not already been accepted, you can be issued a new one at the polls. If your mail ballot is received later and you've already voted in person, the mail ballot will not count.
- Check if we accepted your ballot at mnvotes.gov/track or we can check at your polling place.

Permanent Absentee Ballot

You can receive a mail ballot for all future elections without re-applying. There are two options:

1. Complete the *Permanent Absentee Voter Application* and return it to Minneapolis Elections & Voter Services. Find the application at: vote.minneapolismn.gov/voters/vote-by-mail/permanent-absentee-voter-application/
2. Update your registration at mnvotes.gov/register



Vote Early in Person

Locations and hours

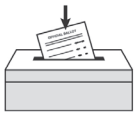
City of Minneapolis Early Vote Center: 980 E Hennepin Ave, Minneapolis, MN 55414

- You do not need to bring anything if you are registered with your current name and address.
- If you need to register or update your registration, bring a required proof of residence. See the ***Guide to Registering on Election Day*** page for a full list of proof of residence options.

Sunday	Monday	Tuesday	Wednesday	Thursday	Friday	Saturday
Oct 5	Oct 6 8 a.m. - 4:30 p.m.	Oct 7 8 a.m. - 4:30 p.m.	Oct 8 8 a.m. - 4:30 p.m.	Oct 9 8 a.m. - 4:30 p.m.	Oct 10 8 a.m. - 4:30 p.m.	Oct 11
Oct 12	Oct 13 <i>Closed: Indigenous Peoples Day</i>	Oct 14 8 a.m. - 4:30 p.m.	Oct 15 8 a.m. - 4:30 p.m.	Oct 16 8 a.m. - 4:30 p.m.	Oct 17 8 a.m. - 4:30 p.m.	Oct 18
Oct 19	Oct 20 8 a.m. - 6 p.m.	Oct 21 8 a.m. - 6 p.m.	Oct 22 8 a.m. - 6 p.m.	Oct 23 8 a.m. - 6 p.m.	Oct 24 8 a.m. - 6 p.m.	Oct 25 9 a.m. - 3 p.m.
Oct 26 9 a.m. - 3 p.m.	Oct 27 8 a.m. - 6 p.m.	Oct 28 8 a.m. - 6 p.m.	Oct 29 8 a.m. - 6 p.m.	Oct 30 8 a.m. - 6 p.m.	Oct 31 8 a.m. - 6 p.m.	Nov 1 9 a.m. - 3 p.m.
Nov 2 9 a.m. - 3 p.m.	Nov 3 7 a.m. - 5 p.m.	Nov 4 <i>Election Day! Vote at your polling place</i>				

One-day early voting pop-ups

Day	Location	Hours
Tuesday, October 21	Weisman Art Museum 333 E River Pkwy, Minneapolis, MN 55455	10 a.m. - 5 p.m.
Wednesday, October 22	Minneapolis Public Service Building 505 4th Ave S, Minneapolis, MN 55415	11 a.m. - 6 p.m.
Thursday, October 23	Urban League Twin Cities 2100 Plymouth Ave N, Minneapolis, MN 55411	11 a.m. - 6 p.m.
Friday, October 24	Midtown Global Market 920 E Lake St, Minneapolis, MN 55407	11 a.m. - 6 p.m.
Monday, October 27	Webber Community Center 4400 Dupont Ave N, Minneapolis, MN 55412	11 a.m. - 6 p.m.



Vote on Election Day at the Polls

Election Day details

- Election Day is **Tuesday, November 4**. Polls are open from **7 a.m. to 8 p.m.**
 - If you are still in line when the polls close, stay there! You are still able to vote.
- On Election Day, you must vote at your assigned polling place.
- You do not need to bring anything if you are registered with your current name and address.
 - If you need to register or update your registration, you will need to bring a required proof of residence. See the **Guide to Registering on Election Day** page for a list of options.

Find your polling place

- Your polling place may have changed since the last time you voted! All voters should check their polling place location before heading to the polls.
- To avoid going to the wrong location, find where to vote at:
pollfinder.sos.state.mn.us



Time off work to vote

Under Minnesota law, you have a right to take time off to vote without losing your pay, personal leave, or vacation time. Your employer cannot interfere with this right.

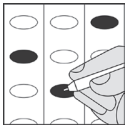
- This applies to in-person early voting as well as Election Day.
- Your employer must pay you for the time you need to vote if it falls within your scheduled work time.
- Take only as much time as you need to vote.

New assistive voting device



The ExpressVote is an assistive voting device that supports voters with marking their ballot. It is available to use during early voting and on Election Day citywide. The ExpressVote features the following:

- Options for larger text, high contrast colors, or both.
- Private blank screen option for blind or low vision voters.
- Review of selections before and after printing the ballot.
- Headphone connection to hear an audio ballot.



Ranked Choice Voting

In local election years, we use Ranked Choice Voting (RCV) for Minneapolis offices. RCV is a voting method where you vote for candidates in order of your preference: first choice, second choice and third choice.

How to mark your RCV ballot

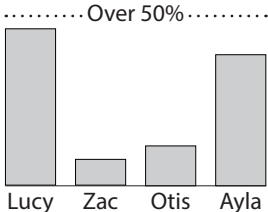
1. Choose your top candidate. This is your first choice candidate and will be the vote that is considered first.
2. If you have a second choice (not required), you may select another candidate. This must be different than your first choice candidate.
3. If you have a third choice (not required), you may choose a final selection. This must be different than your first and second choices.

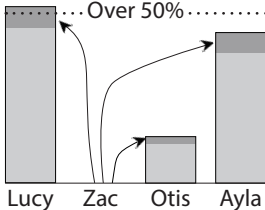
1	1st Choice Select One	2	2nd Choice If any, must be different from your 1st choice	3	3rd Choice If any, must be different from your 1st and 2nd choices
	<input type="radio"/> WEBBER PARK Parks Party	<input checked="" type="radio"/> WEBBER PARK Parks Party	<input type="radio"/> WEBBER PARK Parks Party	<input type="radio"/> WEBBER PARK Parks Party	
	<input checked="" type="radio"/> BELTRAMI PARK Parks Party	<input type="radio"/> BELTRAMI PARK Parks Party	<input type="radio"/> BELTRAMI PARK Parks Party	<input type="radio"/> BELTRAMI PARK Parks Party	
	<input type="radio"/> LOWRY PARK Parks Party	<input type="radio"/> LOWRY PARK Parks Party	<input type="radio"/> LOWRY PARK Parks Party	<input type="radio"/> LOWRY PARK Parks Party	
	<input type="radio"/> POWDERHORN PARK Parks Party	<input type="radio"/> POWDERHORN PARK Parks Party	<input type="radio"/> POWDERHORN PARK Parks Party	<input checked="" type="radio"/> POWDERHORN PARK Parks Party	
	<input type="radio"/> BOSSEN FIELD PARK Parks Party	<input type="radio"/> BOSSEN FIELD PARK Parks Party	<input type="radio"/> BOSSEN FIELD PARK Parks Party	<input type="radio"/> BOSSEN FIELD PARK Parks Party	



To learn more about RCV, visit www.vote.minneapolismn.gov/ranked-choice-voting

How is my vote counted?

- 1 Election officials count first-choice votes. If a candidate gets over 50%, they win. If not, ranked choice counting begins in step 2.


No candidate has over 50% of the first-choice votes. Counting continues in step 2.
- 2 The candidate with the fewest votes is eliminated. Those votes transfer to each voter's second-choice candidate. If a candidate has over 50% of the vote, they win.


Zac's votes transfer to his voters' second choice candidates. Lucy is now the winner.
- 3 If necessary, the process in step 2 repeats until a candidate wins. In each round, the candidate(s) with the fewest votes is eliminated. Only then are votes transferred to each voter's next choice of candidate (if any).

Watch our RCV explainer video!





What help can I get in the polling place?

Bring someone to assist you

- You can bring anyone to help you except an agent of your employer or union.
- Your assistant can help you through the entire voting process, including in the voting booth.
- Assistants can't influence how you vote or share how you vote with others.

Mark your ballot using the ballot marking device

- You can use a ballot marking device if you cannot or choose not to vote using a pen.
- It has a large print display, and Braille keypad and can read the ballot aloud with headphones.
- After you make your selections, the device fills in the choices you made.

Get help from poll workers

- Poll workers are there to help you through the entire process of voting.

Vote from your car using “curbside voting”

- If you can't enter the poll because of mobility or illness, poll workers can bring your ballot out.
- After you mark your ballot, poll workers from two different major parties will bring your ballot inside and insert it into the ballot counter.

Access language translation and interpretation support

- We offer translated voting materials and prioritize hiring bilingual poll workers.
- You can also bring a bilingual assistant with you.



What are my rights?

Under Minnesota election law, you have the right to:

- Take time off work to vote without losing pay, personal leave, or vacation time.
- Vote if you are in line by 8 p.m.
- Register on Election Day if you have the required proof of residence.
- Sign in orally and ask another person to sign for you if necessary.
- Bring someone to help except an agent of your employer or union.
- Bring your minor children with you.
- Vote if you're under guardianship unless a judge revoked that right.
- Vote if you are not incarcerated for a felony conviction.
- Vote without anyone trying to influence your choices.
- Get a replacement ballot if you make a mistake.
- File a written complaint.
- Take a sample ballot into the voting booth.



Guide to Registering on Election Day

You will need to have **one of the following** proofs of residence to register on Election Day:

1 Present a valid photo ID with your current name and address

- Valid Minnesota driver's license, learner's permit or ID; or a receipt for any of these.
- Tribal ID with name, address, photo, and signature.

2 Present both a photo ID and a document with your current name and address

Bring one approved photo ID below
(can be expired)

and
+

Bring one approved document below
(can be shown on an electronic device)

- Driver's license, state ID, or learner's permit issued by any state
- U.S. Passport
- U.S. Military or Veteran ID
- Tribal ID with name, signature, and photo
- Minnesota university, college, or technical college ID
- Minnesota high school ID
- Bill, account, or start-of-service statement due or dated within 30 days of the election for:
 - Phone, TV, or internet
 - Solid waste, sewer, electric, gas, or water
 - Banking or credit card
 - Rent or mortgage
- Residential lease or rental agreement valid through Election Day
- Current student fee statement

3 Bring a registered voter from your precinct who can confirm your address

A voter from your precinct can go with you and sign an oath confirming your address.

4 Photo ID with student housing list

Colleges and universities send election officials a student housing list. If you are on the list, show an approved photo ID to complete your registration.

5 Have an existing registration in the same precinct

If you are registered in the precinct but changed names or moved within the same precinct, you only need to tell the election judge your previous name or address.

6 Bring a Notice of Late Registration letter

If you registered to vote within 20 days of the election, you may get a Notice of Late Registration in the mail. Bring it with you and use it as your proof of residence to register.

7 Bring a staff person from your residential facility

If you live in a residential facility (nursing home, shelter, group home, etc.) a staff person can go with you to vouch your address. The staff must prove their employment at the facility.